

CT DEEP **2016**
FISHING REPORT NUMBER 22
9/8/2016



Pumpkinseed (*Lepomis gibbosus*)



YOU CAN FIND US DIRECTLY ON FACEBOOK. This page features a variety of information on fishing, hunting, and wildlife watching in Connecticut. The address is www.facebook.com/CTFishandWildlife.

SHARE THE EXPERIENCE
Take someone fishing

INLAND REPORT

LARGEMOUTH BASS fishing is generally reported as fair to good (with a few tough spots). Night fishing is productive. Try black jitterbugs and surface poppers. Places to try include Lake McDonough, West Hill Pond, East Twin Lake, Gardner Lake, Pickerel Lake, Beseck Lake, Amos Lake, Beach Pond, Highland Lake, Seymour Reservoir #4, Crystal Lake, Mudge Pond, West Side Pond, Tyler Lake, Mansfield Hollow Reservoir, Dog Pond, Hatch Pond, Park Pond, Lake Wononskopomuc, Lake Saltonstall, Bishop Swamp, Winchester Lake, Congamond Lakes, Quinebaug Lake, Black Pond (Meriden), Burr Pond, Griggs Pond, Anderson Pond, Billings Lake, Moodus Reservoir, Aspinook Pond, Babcock Pond, Pachaug Pond, Lake Hayward, Quonnipaug Lake, Rogers Lake and Stillwater Pond.

Tournament angler reports are from Amos Lake (fair for largemouth, 4.04 lb, 3.79 lb and 3.57 lb lunkers), Lake of Isles (fair, 3.00 lb lunker), Long Pond (tough for most, 4.56 lb lunker), Candlewood Lake (fair to good, 5.67 lb lunker), Winchester Lake (slow to fair, 4.69 lb lunker), Lake Zoar (fair at best, 4.59 lb and 3.44 lb lunkers), and the Connecticut River (slow, 3.14 lb lunker).

SMALLMOUTH BASS. Catches reported from Candlewood Lake, Housatonic River (Upper), Naugatuck River, Lake McDonough, Lake Zoar and Lake Lillinonah. Housatonic River smallmouth fishing has been good.

Tournament angler reports are from Candlewood Lake (fair), Lake Zoar (had to work to get smallmouth) and the Connecticut River (fair).

CARP are keeping rods bent in Lake Lillinonah, Connecticut River (Hartford Power Plant and Wethersfield Cove), Lower Farmington River, lower Quinebaug River, lower Housatonic River, and Aspinook Pond. Look for the 2016 CT CARP open tournament coming this October.

SEE YOU SATURDAY! **Connecticut Hunting & Fishing Days**

Saturday, September 10¹ & 24², 2016.

10 am-4 pm

Join us as we continue celebrating [150 years](#) of natural resource conservation and thank you for your support. Each event has fun activities for all ages, educational programs, a live raptor programs, information about hunting and fishing, door prizes, and more. Best of all, the events are free to attend!

Get all of the details at

www.ct.gov/deep/huntfishday

¹September 10 at [Franklin Wildlife Management Area](#), Franklin

²September 24 at [Sessions Woods Wildlife Management Area](#), Burlington.

Big Time CARP fishing coming to Connecticut once again (October 9-14, 2016). \$100,000 prize if you break the state record. Check it out at <http://www.carptournamentseries.com/site/>

FALLFISH The largest native minnow to Connecticut, Fallfish can reach over 15 inches (typically 8-12 inches). Fallfish provide excellent action on ultra-light tackle and fly rods. The fish are aggressive and will hit a variety of natural and artificial baits (use the same gear you would for trout). Fishing for Fallfish is a great way to spend time on a river (when water temperatures may be too warm for trout or if it seems to be fished out). Good Fallfish waters include the Willimantic River, Shetucket River, Natchaug River, Lower Farmington River (Avon-Windsor), Housatonic River (Cornwall to Kent), Scantic River (Somers to East Windsor), and Yantic River. The current [state record](#) Fallfish (2.25 pounds) was taken in 2012 by Chad Tessman.

NORTHERN PIKE - The bite is on in the Housatonic (Kent) and CT River.

WALLEYE bite is best in Squantz Pond and Batterson Park Pond.

CATFISH – Fair to good fishing is ongoing in our [Catfish Management Lakes](#) and the deeper “holes” in the Connecticut River and Housatonic River. Live shiners are a favorite prey item of this strong fighting fish.

PANFISH continues to entertain. Areas reporting action include Wood Creek Pond, Park Pond, Lake, Lake Hayward, Pickett’s Pond, Morey Pond, Peck Pond, Crescent Lake (Southington), West Side Pond, Freshwater Pond, Center Springs Park Pond, Salters Pond, Dog Pond and Zeiner Pond.

FALL TROUT STOCKING UPDATE: The current environmental conditions (low flows, warm water temperatures) are having an effect on our typical fall stocking programs. At this time we continue to review fall stocking options. As environmental conditions have not significantly improved, it is likely that there will be a number of stocking schedule changes including cancellations, postponements and stockings of alternative water bodies that have better conditions for the stocking of coldwater species.

TROUT-LAKES & PONDS – A few lakes are still producing fair fishing, including East Twin Lake and Highland Lake, Lake Wononskopomuc (Thinfish Copper; Mooselook Wobbler blue/silver at 30 feet), Beach Pond (Kobra 114, 18 or 5, rigger at 23’ feet), Long Pond (streamers), West Hill Pond (south end), and Crystal Lake (Ellington, at 7-8 colors, 40 feet of water).

TROUT- RIVERS & STREAMS - Conditions should be fair to poor again this weekend. Temperatures are returning to mid- July levels and as many streams are still at or near record low flow the best trout fishing will be in places with abundant coldwater; the West Branch Farmington River, Mill River (Fairfield), and Salmon Brook (Granby).

Thermal Refuges are Critical

Thermal refuges are places where cold groundwater seeps or drains into a waterbody. These areas have much lower water temperature than the surrounding main waterbody.

Between June 15 and September 15 mainstem water temperatures can be above lethal limits for trout. Refuge area in medium to large rivers like the Naugatuck, Salmon, Housatonic, and Shetucket, are critical for trout to survive the summertime warm water temperatures.

To protect the trout, all fishing is prohibited in and around all refuges as indicated by signage (below). Please do not disturb the trout that are seeking refuge within these areas and report any violations to DEEP law enforcement immediately 860-424-3333.



Farmington River - Fishing has been very good due to the 2,000 trout stocked last weekend and the current catch and release only regulation in effect on the West Branch (Hartland to Barkhamsted) and conditions should be good for the weekend. Water temperatures are in the low 60's°F in the upper part of the River and low to mid 70's in the Collinsville to Unionville section (with closures around key tributaries). Flows are clear and very low (currently 76 CFS at Riverton, with the Still River adding an additional 4.0 CFS).

On Thursday, August 18, due to high water temperatures and low flows, eight thermal refuges where all fishing is prohibited were established on the West Branch Farmington River and the Farmington River. These areas are at the mouths of the following tributaries to the West Branch Farmington and Farmington rivers: East Mountain Brook (Hallock Brook, New Hartford), Cherry Brook (Canton), Rattlesnake Hill Brook (Canton), Burlington Brook (Burlington), Hawley Brook (Avon), Unionville Brook (Unionville), Hyde Brook (Unionville), and Pequabuck River (Farmington) (see page 4 for more details).

Hatches/patterns be diverse- as there is a variety of insects (none of which are in super numbers) active on the river. Insect hatches are mostly stable and unchanging. Current hatches consist of Isonychia bicolor (major hatch, #10-14, fast water, evening), Tricos (#24), Blue Wing Olives (Drunella sps. & Baetis sps.; #18, 20-24, mid-late afternoon), Cahills/Summer (Stenonema ithaca, #12-14, evenings), Caddis (tan #16-18, all day; green #22-26, evening; summer pupa #18-20 morning), Midges (#22-32, morning), Black Ants (#14-20, mid day in fast water), Black Beetles (#14-18, mid day), Flying Ants (#16-30, mid day, when windy/humid, especially after rain) and Stone Hopper (#8-14, mid-day) are successful patterns.

Housatonic River – Overall, fishing has been good and conditions for the weekend should remain good, especially for Smallmouth Bass and Fallfish (Cornwall to Kent). Flows are clear and near record low levels dating back to the late 1920' and early 1930's (currently 90 CFS at Falls Village and 113 CFS at Gaylordsville). Morning water temperatures are currently in the low to mid 70's °F.

Smallmouth (and Fallfish) are plentiful throughout the entire river and will eagerly hit a variety of poppers, dry flies, nymphs, and streamers. Patterns to try include White Zonkers, Wooly Buggers (go big- larval dobsonflies can be up to 4" in length and are a favorite food item), Muddlers, Grey or Black Ghosts (#4-10). Other insects include flying ants (#14-16, mid-day, when windy/humid, September is peak month), Fall Sulfurs (#16-18), Blue Wing Olives (#18-22), Tricos (#20-22), Leadwing Coachman (#10-12 evening, September is peak month), Sulfurs duns (#16-18, below the dam due to low temperatures, morning; afternoon to early evening for spinners), Light Cahill and Black caddis (#14-18, early morning & evening). Golden stonefly nymphs hatch at first light and adults egg-lay after dark. Try Black Ants (#14-20, mid day in fast water), Black Beetles (#14-18, mid day), Stone Hopper (#8-10, mid day). Don't forget

ANNUAL FARMINGTON RIVER LABOR DAY STOCKING.

Trout (2,000) were stocked from the Hogback Dam (Hartland) to the upper boundary of the TMA (old bridge abutments in Barkhamsted) in preparation for your Labor Day Weekend fishing trips.

Regulations require catch and release from September 1 to 6:00 am on the second Saturday of April. Good Luck!

Stocking map [link](#)

Water in this section of the river will be much lower than normal; however, as it is coming from the bottom of the West Branch Reservoir, it is very cold and will not be stressful for the trout.

The emergency closure and creation of "No Fishing" zones around 8 key tributaries in the lower portion of the Farmington River remains in effect until 9/15/16. No trout will be stocked in the lower sections of the river (to avoid the potential stressful combination of low flow and elevated temperatures).

streamers (morning & evening). Patterns to try include: White, Muddlers, Micky Finn, Woolly Buggers (olive/burned orange or tan #8-12), Grey or Black Ghosts (#4-10).

CONNECTICUT RIVER

LARGEMOUTH BASS and SMALLMOUTH BASS action is come and go. Most catches seem to be in the northern river (Windsor & Enfield area). Small to medium size bait were working well. Try 3-4 inch rubber worms on 3/8 ounce football jigs or 2.5 inch paddle tail worms. **CARP** are being caught in the upper and lower river (Hartford power plant and Wethersfield Cove). Anglers are finding **CATFISH** by night angling in the Hartford to Middletown stretch (live shiners working). Try from just north of Hartford on downstream, fish the outside bends (deep holes are producing as well, try cut bait or live shiners).

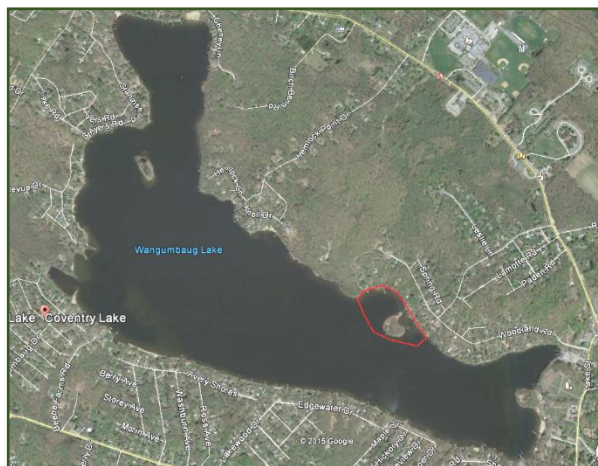
NOTES & NOTICES:

BASHAN LAKE (drawdown). Bashan Lake remains drawn down (slow refill continues – lake currently remains down approximately 4-5 feet – note that refill rate is dependent on rainfall amounts) following dam repairs and the state boat launch remains closed.

BRANFORD RIVER (boat launch). The Branford River state boat launch is currently closed for renovations. This closure is currently expected to last to November 14, 2016. Alternative nearby launch sites include the Guilford Town boat launch and the East River State boat launch, both in Guilford.

COVENTRY LAKE (invasive species alert). Hydrilla, a very highly invasive aquatic plant, has been found growing in Coventry Lake. All lake users should take extra care to check and clean their boats (including canoes, kayaks and rowing sculls), trailers, and fishing equipment before leaving the boat launch, or leaving the lakeshore.

Coventry Lake (Wangumbaug Lake) boaters should avoid the area outlined in red to avoid fragmenting and spreading hydrilla. This is only area in the lake where hydrilla has been found.



DOOLEY POND (drawdown). A drawdown of Dooley Pond to facilitate dam repairs is ongoing (repairs are done, but refill rate will be dependent on rainfall). The state boat launch is currently closed.

GLASGO POND (drawdown). A drawdown of Glasgo Pond to facilitate dam repairs is ongoing (began September 2015). Launching of boats is difficult to impossible.

HIGHLAND LAKE (boating/swimming event). A canoe/kayak race and swim event is scheduled for Saturday, September 10, at Highland Lake from 9 am to 11 am. This event will be held in the north bay at Resha and Holland beaches in the vicinity of the state boat launch. Boaters should use extra care when accessing the lake from the state launch.

LAKE ZOAR (waterski event). A water ski clinic for the disabled is scheduled for **Saturday, August 27**, in the upper end of Lake Zoar (approximately the upper first mile of the lake below the Shepaug Dam). This event run from 9 am to 4 pm, and boaters are asked to take care when passing through this area (marked by buoys) of the lake, and avoid interfering with the event.

THERMAL REFUGES: On Thursday, August 18, due to high water temperatures and low flows, eight thermal refuges were established on the West Branch Farmington River and the Farmington River.

These areas are at the mouths of the following tributaries to the West Branch Farmington and Farmington rivers: East Mountain Brook (Hallock Brook, New Hartford), Cherry Brook (Canton), Rattlesnake Hill Brook (Canton), Burlington Brook (Burlington), Hawley Brook (Avon), Unionville Brook (Unionville), Hyde Brook (Unionville), and Pequabuck River (Farmington).

There are also thermal refuge areas on the Housatonic, Naugatuck and Shetucket Rivers. All thermal refuges are now closed to all fishing. These areas will all reopen on September 15. There is no fishing within 100 feet of signs indicating such closure at or near the mouths of tributaries to these rivers. Additionally, there is a thermal refuge on the Salmon River in East Haddam, located around a spring entering the Salmon River approximately 220 feet south of the unused paved boat launch at the state-owned property formerly known as the Sunrise Resort off of Route 151. The refuge includes all water within 100 feet from the end of the pipe as posted. The Salmon River refuge is closed to fishing and access through September 15.

GIVE WILDLIFE SOME SPACE we would like to remind everyone to give wildlife appropriate space. Recently human wildlife interactions have been reported with Mute Swans (Lake Zoar) and Beaver (Quinebaug River). Remember- wild animals can be unpredictable.

PHOTO CONTEST: Do you have the next Angler's Guide cover shot? Email us your high quality (high resolution) photos at Deep.inland.fisheries@ct.gov and include [photo contest](#) in the subject line.

CT FISHIN' TIPS is our monthly e-newsletter dedicated to providing information, tips and pointers about fishing in Connecticut. Get CT Fishin' Tips delivered automatically to your in box by subscribing at www.ct.gov/deep/newslettersubscription

NEW! Youth Fishing Passport [Fishing Challenge Scorecard](#): Download the new scorecard for your Youth Fishing Passport Holder on the program web page at www.ct.gov/deep/yfp. Top anglers will receive a great prize pack of fishing gear.

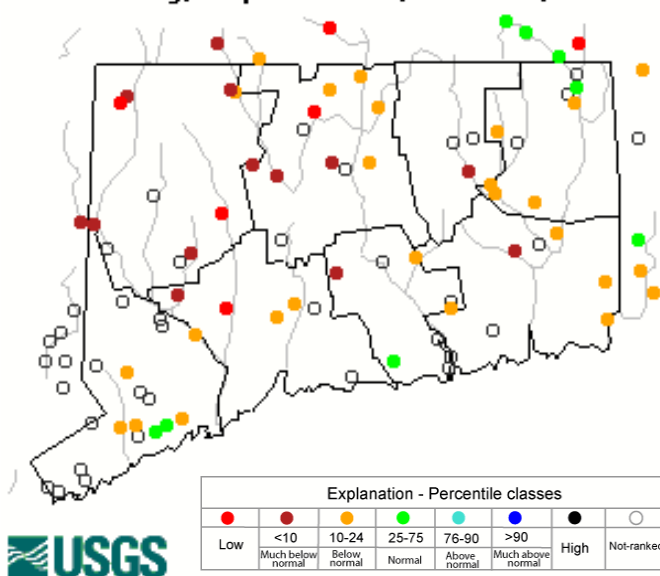
¡VOMONAS A PESCAR! Información disponible en español relacionada con la pesca en Connecticut.

Los folletos de la pesca en [aguas dulces](#) y [aguas saladas](#) fueron traducidos en español para la distribución a la comunidad hispana residentes en Connecticut. El objetivo de los folletos de pesca en español es para ayudar a fomentar, aumentar y promover la participación hispana en esta actividad que se lleva acabo en familia.

Somos afortunados en Connecticut por el gran abastecimiento de peses . La población de Connecticut tiene oportunidad de pescar a no más de 5 millas de su residencia. Si a usted le gusta la Trucha, Lobina, Lucio Norteamericano, Panfish o especies de aguas saladas como Lobina Rayada, Summer Flounder, Porgy o Anjova, las aguas de Connecticut lo ofrecen. ¡Vamonos a Pescar!

Stream flow conditions

Thursday, September 08, 2016 18:30ET



Data in the state graphic to the left are generated by the United States Geologic Survey (USGS) and are available on line at: <http://waterdata.usgs.gov/ct/nwis/rt>. A percentile is a value on a scale of one hundred that indicates the percent of data in the data set equal to or below it. For example streamflow greater than the 75th percentile means only ¼ of the streamflow values were above the value and thus would be considered "above normal". Stream flow between the 25th and 50th are considered to be "normal flows" and those 25th or less are considered to be "below normal".

ZEBRA MUSSELS REMINDER

Zebra mussels are now found in a number of locations scattered throughout the Housatonic River and its impoundments including Lake Lillinonah (*since 2010*), Lake Zoar (*since 2010*) and Lake Housatonic (*since 2011*).

Prior to their discovery in Lakes Lillinonah and Zoar in 2010, zebra mussels had been found (1998) in CT only in East Twin Lake and West Twin Lake (Salisbury). Anglers fishing in any of these waters and western Connecticut in general **should use extra care to avoid transporting water, aquatic vegetation, and possibly zebra mussels to new locations.** Information

For more information including precautions that should be taken to prevent the spread of zebra mussels to additional waters, visit www.ct.gov/deep/invasivespecies or the Aquatic Invasive species section of the 2016 CT angler's Guide(www.ct.gov/deep/anglersguide).



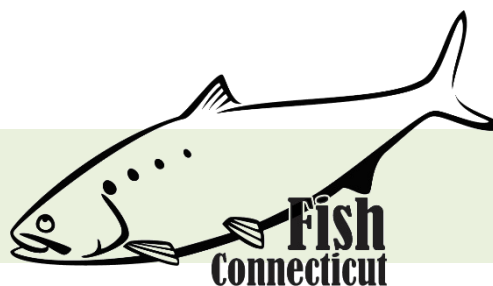
REMINDER TO ANGLERS-

FISHING IN OR CASTING INTO PERMITTED SWIM AREAS IS PROHIBITED.

State regulations prohibit fishing in or into a swim area that's been permitted by DEEP. Additionally, vessels cannot be operated within a permitted swim area, and there's a 100 foot "no-wake" zone around the perimeter. Swim areas that have been permitted by DEEP will be marked by white buoys with orange markings, and there should be a permit number posted on the buoys. They may or may not have small orange barrier floats to further demarcate the area. Should questions arise concerning the validity of the swim area (*no permit numbers or the area appears to have been changed/enlarged or keeps moving*), please contact DEEP's Boating Division at 860-434-8638.



MARINE FISHING REPORT



Surface water temperatures in Long Island Sound (LIS) remain in the upper 70's °F. Check out the following web sites for more detailed water temperatures and marine boating conditions:

<http://www.mysound.uconn.edu/stationstat.html>

http://marine.rutgers.edu/mrs/sat_data/?nothumbs=1

<http://www.ndbc.noaa.gov/>

<http://www.wunderground.com/MAR/AN/330.html>

NEW SHARK REGULATIONS – EFFECTIVE MONDAY, AUGUST 22, 2016:

Notice to Marine Anglers: An Atlantic Highly Migratory Species (HMS) permit is required to take, possess, or land any shark species, other than smooth or spiny dogfish, in this state.

To obtain an HMS permit visit: <http://www.greateratlantic.fisheries.noaa.gov/aps/permits/> or call NMFS Customer Service Center at (888) 872-8862. CT Marine anglers may encounter Sand Tiger and Sandbar (Brown) Shark which are protected and prohibited species and they must be released unharmed.

IF YOU DON'T KNOW, PLEASE LET IT GO! [Coastal shark information.](#)

Connecticut State Boundary Line in Long Island Sound. Anglers please note: Though Connecticut has reciprocity with neighboring states (New York, Rhode Island, Maine and Massachusetts), residents of Connecticut are required to have a CT Resident Marine Waters Sport Fishing License to fish in the Marine District.

WHALES AND SEALS have been reported in Long Island please see check [WHALE WATCHING GUIDELINES](#).

Note: All marine mammals are protected by the Federal Marine Mammal Protection Act. Following these recommended operational guidelines helps minimize chances of harassing or injuring whales and violating Federal law. Guidelines apply to all large whales from Maine through Virginia, except North Atlantic right whales. It is illegal to approach a right whale within 500 yards (1500 feet) unless granted specific exemption or authorization.

SEA TURTLES: [See a Tangled Turtle? Call the Hotline!](#) 1-860-572-5955 ext. 107. This is the time of year when leatherback, loggerhead, green, and Kemp's ridley sea turtles return to northern waters, with many sightings around Long Island Sound.

STRIPED BASS fishing remains very good during overcast conditions (overcast days). Live lining bunker (Atlantic menhaden) or an eel on the reefs at dawn and dusk still producing some nice bass (50 inches – 54 pounds, Plum Gut). Striper spots include the Watch Hill reefs, Ram Island Reef in Fishers Island Sound, lower Mystic and Thames River, the Race, Sluiceway, **Plum Gut**, Pigeon Rip, outer Bartlett Reef, Black Point, the “humps” south of Hatchett Reef, lower Connecticut River, Long Sand Shoal, Cornfield Point, Southwest Reef (outer), Sixmile Reef, Falkner Island area, the reefs off Branford, New Haven Harbor (Breakwalls) and the upper reaches, Charles Island area, lower Housatonic River, buoys 18 and 20 off Stratford Point, Stratford Shoal/Middle Ground, Milford Point, Penfield Reef, around the Norwalk Islands, and Cable and Anchor Reef. ***Don't have a Boat? Hook up with the many Party or Charter Boats found throughout CT's shoreline from Greenwich to Stonington.***

STRIPED BASS ANGLERS FISHING IN RHODE ISLAND WATERS - are advised that the state of Rhode Island has adopted the following regulations pertaining to striped bass. These regulations apply to all Rhode Island state lands and waters including the waters around Block Island: **“Any person recreationally harvesting a striped bass thirty-four (34) inches or larger shall at the time of harvest have the right pectoral fin removed at a point as close to the body of the fish as possible.”**

BLACKFISH (Tautog) fishing **closed** on September 1, 2016 and will reopen on October 10, 2016.

BLUEFISH fishing is very good. Large numbers of bluefish in the lower estuaries and rivers feeding on menhaden. The “Top-water” bite has been phenomenal. Eastern Sound has seen much better fishing for “alligator –size” blues. Bluefish fishing spots include the reefs off Watch Hill, the Race, Thames River, Sluiceway, Plum Gut, Pigeon Rip, lower Connecticut River, Long Sand Shoal, Sixmile Reef, Falkner Island area, New Haven Harbor and upper reaches, lower Housatonic River, buoys 18 and 20 off Stratford Point, Stratford Shoal/Middleground, Penfield Reef, and Cable and Anchor Reef.

SNAPPER fishing has improved in the tidal creeks and rivers with fish measuring 6 to 10 inches in length.

BLACK SEA BASS fishing has been very good and consistent in the Sound. The sea bass have finished spawning and are feeding heavily on crabs, squid and small fish throughout Long Island Sound. Plan a trip on a [party/charter boat](#) trip to fish off of Block Island...there are many giant-sized sea bass out there. Eastern Sound (Fishers Island to Block Island and northeast of Montauk) anglers are having better success. For those willing to travel, Block Island Sound is the place to be for humpback sea bass. Closer to home, the rocky reefs from Niantic, to Branford (Faulkner Island) have been consistent all season. A reminder to all anglers...if you are fishing in water deeper than 100', barotrauma can cause released fish to struggle to make it back to the bottom. A descending device such as the Shelton Fish Descender can help assist the sea bass air bladder to recompress and get safely back down to the depths. See Fishsmart.org for more information.

SUMMER FLOUNDER (fluke) fishing is getting better as water temperature slowly decrease and fish begin to migrate. Fishermen are reporting some very large doormat fluke being caught (11 lbs 4 ozs, eastern sound). Apparently, the bite is in deeper water (40 to 110 feet). Live lining snapper blues in deep water (80 to 120 ft) is the preferred method by fluke sharpies. The usual summer flounder spots include the south shore of Fishers Island (Isabella Beach, Wilderness Point), Napatree Point and along the beach, off the Stonington breakwater, mouth of the Mystic River over to Groton Long Point, Twotree Island Channel, Black Point/Niantic Bay including the Bloody Grounds, Sound View Beach, Long Sand Shoal, Falkner Island area, New Haven Harbor, off the mouth of the Housatonic River during the flood tide, and around the Norwalk Islands.

SCUP (porgy) fishing is very good throughout Long Island Sound. They are everywhere as one angler remarked. In the west the Norwalk area (Cockenoe Island) is fishing very well. Otherwise, some good locations in the west are: the lower Housatonic River to Charles Island, Morningside (Milford), Coast Guard Jetty at Southport Beach, Rick Jetty at Calf Pasture beach, **South Benson Fishing Pier, Sherwood Island, Pleasure Beach Fishing Pier, St Mary's by the Sea** and **Stratford wall along with Long Beach** (excellent shore spots). Other shore spots include **The Sound School Fishing Pier/Dock, Rocky Neck State Park**, Harkness Memorial State Park, **Meigs Point, Hammonasset**, Sherwood Island State Park and Fort Trumbull State Park. Fish during the high tide at these shore locations. Locate your favorite [Enhanced Shore Fishing Opportunities](#) for these hard fighting and excellent eating “Reef Slammers”.

ATLANTIC BONITO & LITTLE TUNNY fishing is tough one day and great another...you never know with these fast swimming tunas. These small tunas are cruising around from Pt. Judith, Watch Hill to Pine

Island (including Fishers Island Sound), the Race to Little Gull Island, from Bartlett Reef to Black Point and west to New Haven. Dawn is the best time to fish for these inshore tunas. **Try casting metal (heavy) lures to feeding fish on the surface. A quiet approach and finding birds (gulls/terns) actively feeding is the key to a successful trip.**

HICKORY SHAD fishing is good in the Black Hall River and fair in the Lieutenant River, **Housatonic River** and the lower Connecticut River (DEEP Marine Headquarters fishing pier). Fishing remains good at Fort Trumbull, Black Hall, Clinton Harbor River systems and the lower Connecticut River (DEEP Marine Headquarters fishing pier). Both snappers and hickory shad can be found schooling together at these locations.

BLUE CRAB fishing is good in all tidal creeks and bays, especially around pilings in the evening. Remember...all egg bearing females must be released **without avoidable injury**. Minimum carapace length is 5 inches for a hard shell crab. Legal gear types include: scoop (dip) net, hand line, star crab trap, circular (topless) trap not exceeding 26 inches in diameter. Maryland Style Crab traps are prohibited. Chicken with the skin on it (along with a long handle net) and a small circular crab trap is the preferred method to capture these tasty crabs. Blue Crab Fact Sheet Angler's please also note: It's illegal to snag blue crabs.

GOT A FISHING REPORT - PLEASE EMAIL US AT deep.marine.fisheries@ct.gov

NOTABLE CATCHES:

Species	Length (in.)	Weight (lb)	Angler
Smooth Puffer	25.25 in.	9 lb. 6 oz.	Wayne Schneider
Bluefish	38 in.	14 lb. 2 oz.	John Kijak Jr.
Black Sea Bass	20.75 in.	-	Alex Erdmann
Atlantic Needlefish	34 in.	-	Zacery Martindale
Black Sea Bass	24 in.	4 lb. 8 oz.	Todd Bacon

For Current Connecticut Recreational Fishing Regulations: Anglers should consult the 2016 Connecticut Anglers Guide which is now available at most Town Clerks Offices, DEEP offices and at tackle stores selling fishing licenses. Current regulations, electronic versions of the Angler's Guide and additional information can all be accessed on the DEEP website at: www.ct.gov/deep/fishing.

The Connecticut Department of Energy and Environmental Protection is an Affirmative Action/Equal Opportunity Employer that is committed to complying with the requirements of the Americans with Disabilities Act. Please contact us at (860) 418-5910 or deep.accommodations@ct.gov if you have a disability and need a communication aid or service; have limited proficiency in English and may need information in another language; or if you wish to file an ADA or Title VI discrimination complaint.

DEEP WEEKLY Fishing Report



**Connecticut Department of
ENERGY & ENVIRONMENTAL PROTECTION**
79 Elm Street, Hartford, CT 06106
www.ct.gov/deep

Pumpkinseed image courtesy Duane Raver/USFWS.